

THIS INSTRUMENT PREPARED BY  
 DAVID P. LINDLEY  
 OF  
**CAULFIELD and WHEELER, INC.**  
 SURVEYORS - ENGINEERS - PLANNERS  
 7900 GLADES ROAD, SUITE 100  
 BOCA RATON, FLORIDA 33434 - (561)392-1991

# PALM BEACH PARK OF COMMERCE, P.I.P.D. - PLAT 20

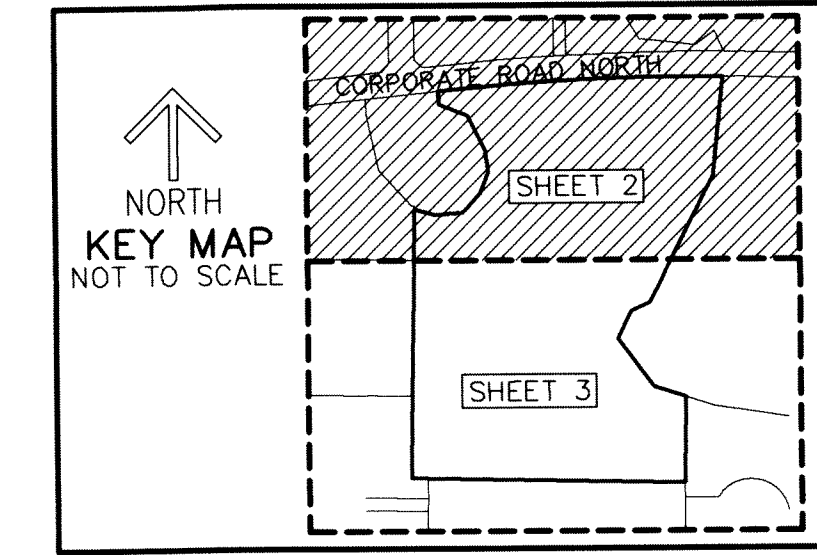
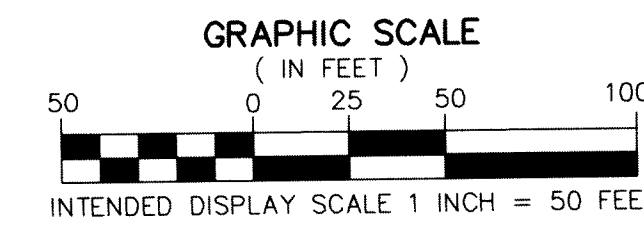
BEING A PORTION OF SECTIONS 17 AND 18, TOWNSHIP 41 SOUTH, RANGE 41 EAST, PALM BEACH COUNTY, FLORIDA.

### LEGEND/ABBREVIATIONS

- C - CENTERLINE
- Δ - DELTA (CENTRAL ANGLE)
- CB - CHORD BEARING
- CD - CHORD DISTANCE
- DE - DRAINAGE EASEMENT
- E - EASTING (WHEN USED WITH COORDINATES)
- L - ARC LENGTH
- LB - LICENSED BUSINESS
- N - NORTHING (WHEN USED WITH COORDINATES)
- O.R.B. - OFFICIAL RECORD BOOK
- P.I.P.D. - PLANNED INDUSTRIAL PARK DEVELOPMENT
- PC - POINT OF CURVATURE
- PNT - POINT OF NON-TANGENCY
- PT - POINT OF TANGENCY
- R - RADIUS
- UE - UTILITY EASEMENT
- PRM - DENOTES SET PERMANENT REFERENCE MONUMENT  
 4" x 4" x 24" CONCRETE MONUMENT WITH  
 ALUMINUM DISK STAMPED "C&W PRM LB3591"  
 UNLESS NOTED OTHERWISE

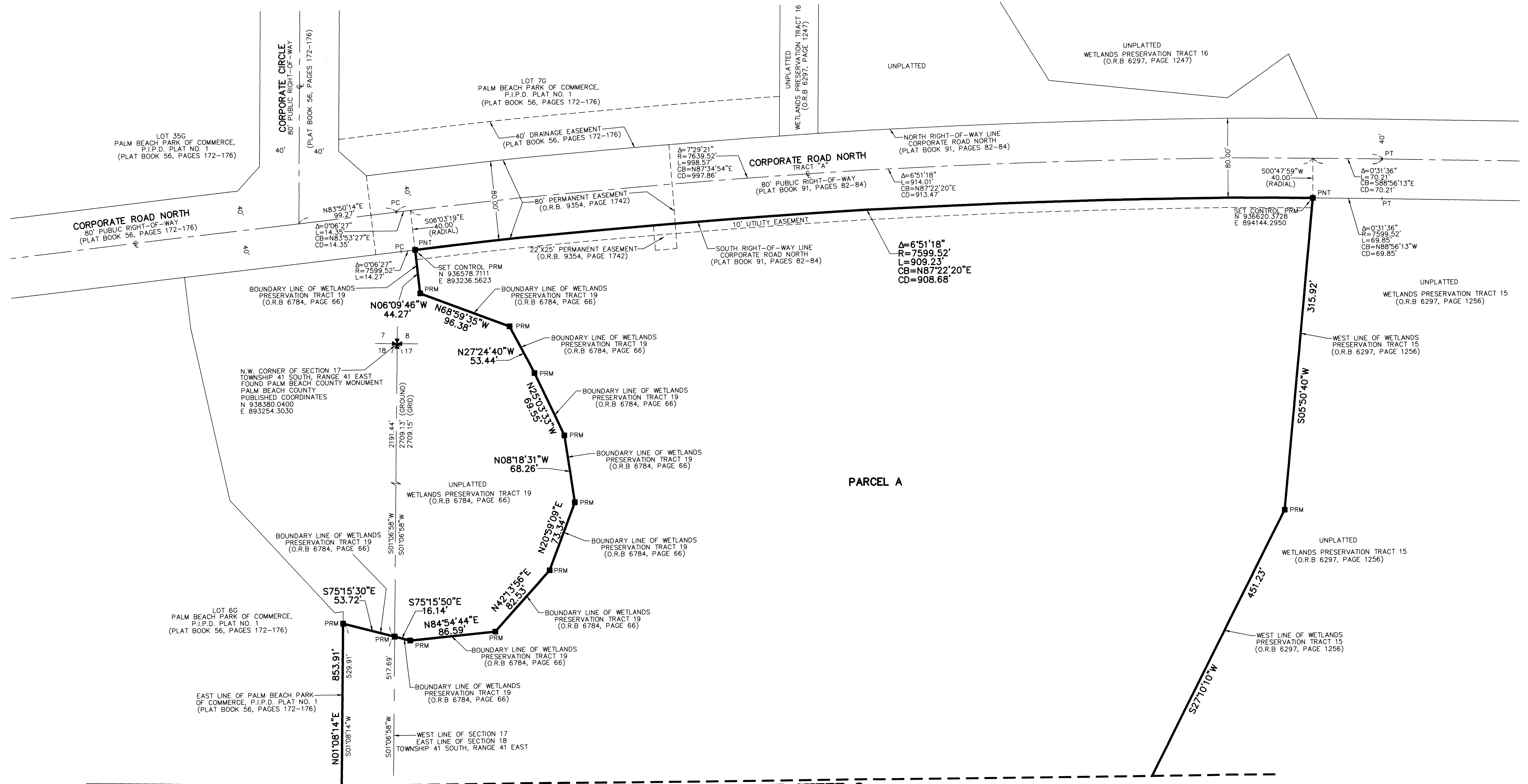
### NOTES COORDINATES, BEARINGS AND DISTANCES

COORDINATES SHOWN ARE GRID  
 DATUM = NAD 83 1990 ADJUSTMENT  
 ZONE = FLORIDA EAST  
 LINEAR UNIT = US SURVEY FEET  
 COORDINATE SYSTEM 1983 STATE PLANE  
 TRANSVERSE MERCATOR PROJECTION  
 ALL DISTANCES ARE GROUND, UNLESS OTHERWISE NOTED  
 SCALE FACTOR = 1.00000559  
 GROUND DISTANCE X SCALE FACTOR = GRID DISTANCE  
 BEARINGS AS SHOWN HEREON ARE GRID DATUM,  
 NAD 83 1990 ADJUSTMENT, FLORIDA EAST ZONE.



179

**SHEET 2 OF 3**



**MATCH LINE SHEET 3**